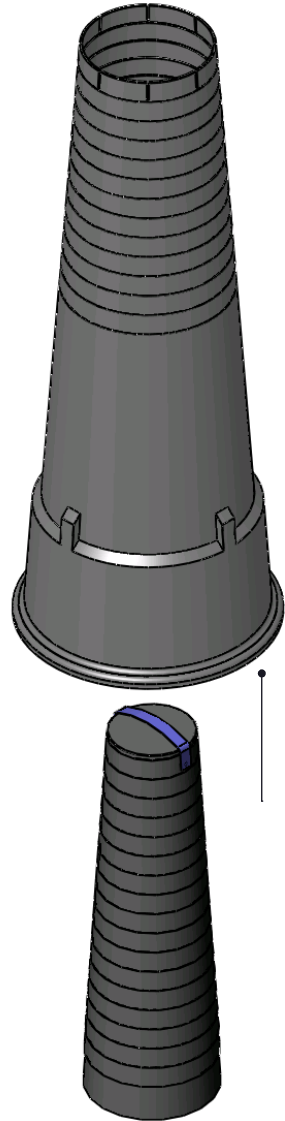
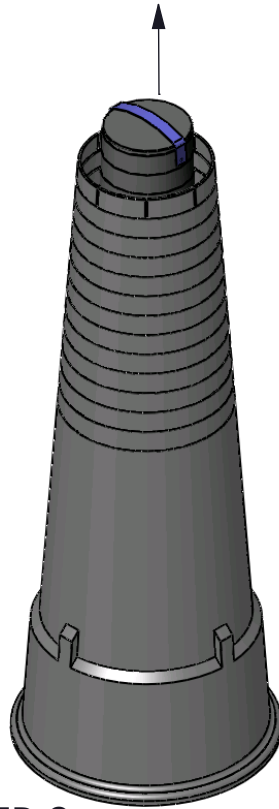


# ASSEMBLING DETAIL



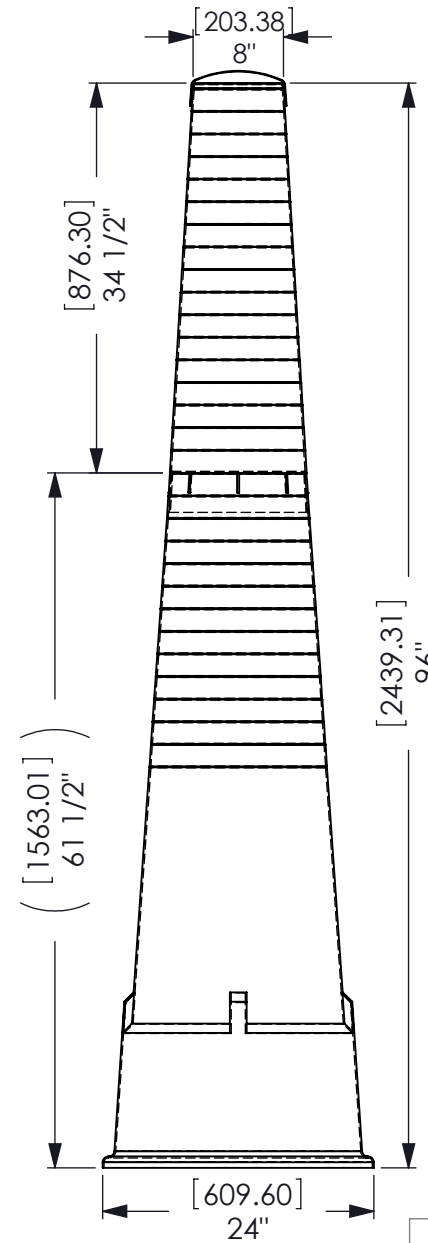
## STEP 1.

Slide the extension Tube into the 10"-12" Tube.



## STEP 2.

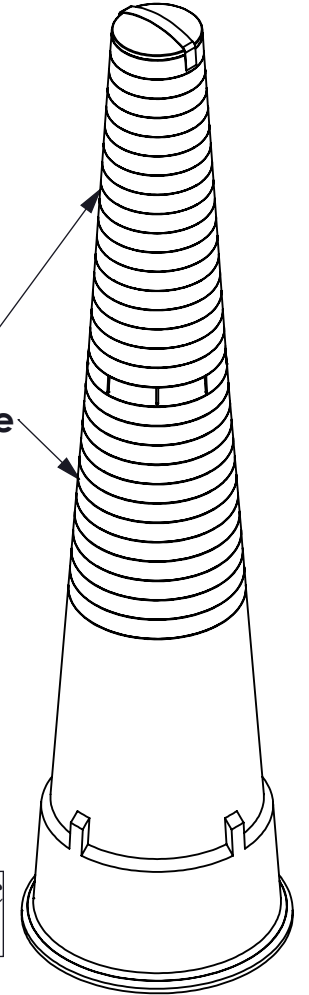
Use the strap handle to pull the Extension tube in place.



**Assembled View**

Extension Tube connected to 10"-12" Footing Tube

**Isometric view**



The **FOOTING TUBE**

**PROPRIETARY AND CONFIDENTIAL**

THE INFORMATION CONTAINED IN THIS DRAWING IS THE SOLE PROPERTY OF BRENT CLIFF. ANY REPRODUCTION IN PART OR AS A WHOLE WITHOUT THE WRITTEN PERMISSION OF BRENT CLIFF IS PROHIBITED.

MATERIAL  
100% RECYCLED POLYETHYLENE

DO NOT SCALE DRAWING

NAME	DATE
MN	OCT 06
CHECKED	BC
ENG APPR.	
MFG APPR.	

BEARING AREA: 371 SQ. IN or 239354 SQ. mm

VOLUME OF CONCRETE: 9.35 CU. FT or 0.265 Cu. meter

<b>EXTENTION TUBE connected to 10-12 F-TUBE</b>			
SIZE <b>A</b>	DWG. NO. EXTENSION.DWG	REV.	
SCALE: NTS	WEIGHT:	SHEET 1 OF 1	